
100% non-slip surface

Boat ramp for boats, canoes, kayaks, paddles, jets ski and more...



ADVANTAGES



- > Durable
- > Permeable
- > Customizable
- > 100% recyclable
- > UV, weather & salt water resistance
- > Highly engineered
- > Flexible & lightweight
- > Robust
- > Removable, easy installation with minimal ground preparation, by 2 people in less than 15min

Technical specifications



2 years warranty



ISO 9001 & ISO 14001 certification



experience of Access Mat solutions

Boatramp™ Lightweight AFX

Max load capacity → 3,5 tons and more
(depending on the type of ground)

Dimension		Roll weight	Roll diameter	Blue Jay	Golden Sand
Width	Length				
1m 3.25ft	5 m 16 ft	8 kg 18lb	30 cm 12"	300248-0500	300252-0500
	10 m 33 ft	15 kg 33 lb	35 cm 14"	300249-1000	300253-1000
	15 m 50 ft	21 kg 46 lb	43 cm 17"	300249-1520	300253-1520
	20 m 66 ft	28 kg 62 lb	50 cm 20"	300250-2000	300254-2000
	25 m 82 ft	34 kg 75 lb	56 cm 22"	300250-2500	300254-2500
	30 m 100 ft	41 kg 90lb	58 cm 23"	300251-3040	300255-3040
1,50m 5ft	5 m 16 ft	11 kg 24 lb	30 cm 12"	300256-0500	300260-0500
	10 m 33 ft	21 kg 46 lb	35 cm 14"	300257-1000	300261-1000
	15 m 50 ft	31kg 68 lb	43 cm 17"	300257-1520	300261-1520
	20 m 66 ft	41 kg 90 lb	50 cm 20"	300258-2000	300262-2000
	25 m 82 ft	50 kg 110 lb	56 cm 22"	300258-2500	300262-2500
	30 m 100 ft	60 kg 132 lb	58 cm 23"	300259-3040	300263-3040
2m 6.5ft	5 m 16 ft	15 kg 33 lb	30 cm 12"	300264-0500	300268-0500
	10 m 33 ft	28 kg 62 lb	35 cm 14"	300265-1000	300269-1000
	15 m 50 ft	41 kg 90 lb	43 cm 17"	300265-1520	300269-1520
	20 m 66 ft	54 kg 119 lb	50 cm 20"	300266-2000	300270-2000
	25 m 82 ft	67 kg 148 lb	56 cm 22"	300266-2500	300270-2500
	30 m 100 ft	80 kg 176 lb	58 cm 23"	300267-3040	300271-3040
3m 10ft	3 m 10 ft	12kg 26 lb	25cm 8"	300470-0306	300276-0306
	5 m 16 ft	22 kg 49 lb	30 cm 12"	300470-0500	300276-0500
	10m 33 ft	42 kg 93 lb	35 cm 14"	300471-1000	300277-1000
	15 m 50 ft	61 kg 134 lb	43 cm 17"	300471-1520	300277-1520
	20 m 66 ft	81 kg 179 lb	50 cm 20"	300472-2000	300278-2000
	25 m 82 ft	100 kg 220 lb	56 cm 22"	300472-2500	300278-2500

Exact widths in m → 0,99m | 1,53m | 1,98m | 3,06m

Boatramp™ Heavy-duty A2X

Max load capacity → up to 40 tons
(depending on the type of ground)

Dimension		Roll weight	Roll diameter	Golden sand	White
Width	Length				
1m 3.25ft	5m 16ft	10kg 22lb	40cm 16 "	300340-0500	-
	10m 33ft	18kg 40lb	50cm 20 "	300341-1000	-
	15m 50ft	26kg 57lb	55cm 22 "	300341-1520	-
	20m 66ft	35kg 77lb	60cm 24 "	300342-2000	-
	25m 82ft	43kg 95lb	65cm 26 "	300342-2500	-
	30m 100ft	51kg 112lb	70cm 27 "	300343-3040	-
2m 6.5ft	5m 16ft	19kg 42lb	40cm 16 "	300348-0500	-
	10m 33ft	35kg 77lb	50cm 20 "	300349-1000	-
	15m 50ft	52kg 115lb	55cm 22 "	300349-1520	-
	20m 66ft	68kg 150lb	60cm 24 "	300350-2000	-
	25m 82ft	85kg 187lb	65cm 26 "	300350-2500	-
	30m 100ft	101kg 223lb	70cm 27 "	300351-3040	-
3m 10ft	5m 16ft	27kg 60lb	40cm 16 "	300352-0500	-
	10m 33ft	52kg 115lb	50cm 20 "	300353-1000	-
	15m 50ft	77kg 170lb	55cm 22 "	300353-1520	-
	25m 82ft	126kg 278lb	65cm 26 "	300354-2500	-
4,20m 13.8ft	5m 16ft	38kg 84lb	40cm 16 "	-	220468-0500
	10m 33ft	72kg 159lb	60cm 24 "	-	220468-1000
	15m 50ft	107kg 236lb	65cm 26 "	-	220468-1520

Exact widths in m → 0,99m | 1,53m | 1,98m | 3,06m

Easy installation & low maintenance

QUICK INSTALLATION

Boatramp™ is easy and quick to install. **Unpack, unroll and anchor** the mat in the ground !

Standard spikes and staples are provided with the mat.

Additional anchoring options :

- **Concrete anchoring kit**
- **Wood anchoring kit**
- **Compact ground anchoring kit**
- **Underwater anchoring kit for soft ground**
- **Underwater anchoring kit for compact ground**



EASY MAINTENANCE

Excellent corrosion resistance:

- **Galvanized steel anchors**
- **Aluminum rivets and stainless steel eyelets**

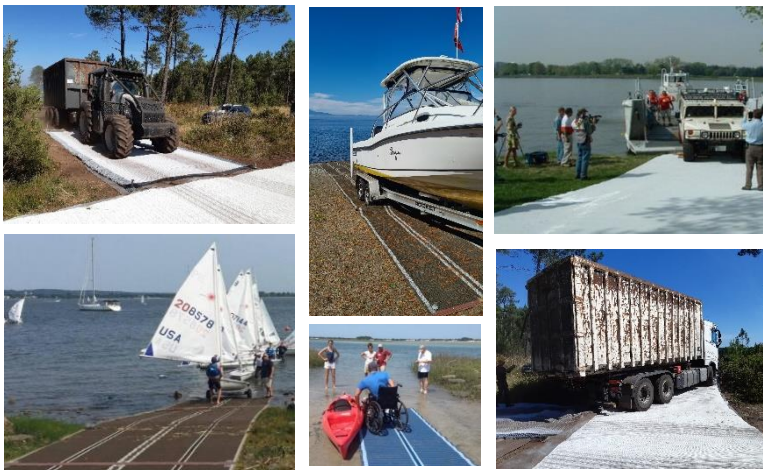
Use a broom, a leaf blower or a high pressure water jet to clean the Boatramp™

Tensile strength*	>100 kN/m 10 t/m 680lb/ft
Weight	<2kg/m ² 0.4lb/sqft
Temperature: use & storage*	-40°C /+ 80°C -104°F /+176°F
Combustion classification*	UL94 HB
Fire resistance	B _{FL} -s1 (EN 13501-1)

*Non-contractual data

Applications: accommodating light and heavy traffic on unstable ground

Maximum ground grip



ADA/ABA compliant
Disabled standards



Bare foot friendly– Boatramp™ AFX

- > Soft
- > Heat resistant



Pedestrians and family with

- > Strollers
- > Wagon



Traffic

- > Bikes
- > Quads, Scooters...
- > Cars, trailers, floatplanes, boats...
- > Trucks & construction equipment



> **Corrugated surface** providing traction to wheeled vehicles

> **Preservation of soil condition**

What are our additional products?

Mobi-chair™ Floating Wheelchair



Mobi-roller™ Mat dispenser



Mobi-deck™ Rigid panel



Mobi-fence™ Sand fence



info@mobi-mat.com